

Collateral 360 User Guide

Oracle Banking Credit Facilities Process Management

Release 14.5.2.0.0

Part No. F47458-01

August 2021

Oracle Banking Credit Facilities Process Management User Guide
Oracle Financial Services Software Limited
Oracle Park
Off Western Express Highway
Goregaon (East)
Mumbai, Maharashtra 400 063
India

Worldwide Inquiries:

Phone: +91 22 6718 3000

Fax: +91 22 6718 3001

www.oracle.com/financialservices/

Copyright © 2020, 2021, Oracle and/or its affiliates. All rights reserved.

Oracle and Java are registered trademarks of Oracle and/or its affiliates. Other names may be trademarks of their respective owners.

U.S. GOVERNMENT END USERS: Oracle programs, including any operating system, integrated software, any programs installed on the hardware, and/or documentation, delivered to U.S. Government end users are “commercial computer software” pursuant to the applicable Federal Acquisition Regulation and agency-specific supplemental regulations. As such, use, duplication, disclosure, modification, and adaptation of the programs, including any operating system, integrated software, any programs installed on the hardware, and/or documentation, shall be subject to license terms and license restrictions applicable to the programs. No other rights are granted to the U.S. Government.

This software or hardware is developed for general use in a variety of information management applications. It is not developed or intended for use in any inherently dangerous applications, including applications that may create a risk of personal injury. If you use this software or hardware in dangerous applications, then you shall be responsible to take all appropriate failsafe, backup, redundancy, and other measures to ensure its safe use. Oracle Corporation and its affiliates disclaim any liability for any damages caused by use of this software or hardware in dangerous applications.

This software and related documentation are provided under a license agreement containing restrictions on use and disclosure and are protected by intellectual property laws. Except as expressly permitted in your license agreement or allowed by law, you may not use, copy, reproduce, translate, broadcast, modify, license, transmit, distribute, exhibit, perform, publish or display any part, in any form, or by any means. Reverse engineering, disassembly, or decompilation of this software, unless required by law for interoperability, is prohibited.

The information contained herein is subject to change without notice and is not warranted to be error-free. If you find any errors, please report them to us in writing.

This software or hardware and documentation may provide access to or information on content, products and services from third parties. Oracle Corporation and its affiliates are not responsible for and expressly disclaim all warranties of any kind with respect to third-party content, products, and services. Oracle Corporation and its affiliates will not be responsible for any loss, costs, or damages incurred due to your access to or use of third-party content, products, or services.

Contents

1.	Welcome to Oracle Banking Credit Facilities Process Management	4
2.	Collateral 360 Degree View	5
2.1	Collateral 360 Degree View – Relationship Manager	6
2.1.1	Overall Facility Limits	6
2.1.2	Overall Collateral	7
2.1.3	LTV Details	8
2.1.4	Collateral Transaction Details	9
2.1.5	Collateral Covenant Compliance	9
2.1.6	Upcoming Events	10
2.1.7	Guidelines	10
2.1.8	Bank Deal Enablers	11
2.2	Collateral 360 Degree View – Bank User View	12
2.2.1	Overall Facility Limits	12
2.2.2	Overall Collateral	13
2.2.3	LTV Details	14
2.2.4	Collateral Transaction Details	15
2.2.5	Collateral Covenant Compliance	15
2.2.6	Collateral Seniority	16
2.2.7	Collateral Valuation List	16
2.3	Collateral 360 Degree View – Customer View	17
2.3.1	Overall Facility Limits	18
2.3.2	Overall Collateral	18
2.3.3	LTV Details	19
2.3.4	Collateral Transaction Details	20
2.3.5	Collateral Covenant Compliance	20
2.3.6	Collateral Seniority	21
2.3.7	Collateral Valuation List	21
3.	Reference and Feedback	23
3.1	References	23
3.2	Feedback and Support	23

1. Welcome to Oracle Banking Credit Facilities Process Management

Welcome to the Oracle Banking Credit Facilities Process Management (OBCFPM) User Manual. This manual provides an overview on the OBCFPM application and guides you through the various steps involved in creating and processing collaterals and credit facilities transactions.

If you need any information, look out for the help icon.

This document is intended for helping you to conveniently create and process collaterals and credit facilities transactions in OBCFPM

Overview of OBCFPM

OBCFPM is a collateral and credit facilities middle office platform which enables your bank to streamline the Collateral and Credit facilities operations.

Benefits

OBCFPM application provides service for the customers and financial institutions. This service helps the financial institutions to manage the Collaterals and Credit Facilities of the corporate clients.

OBCFPM allows you to:

- Handle Collateral Evaluation, Collateral Perfection, Collateral Review, Collateral Release, Collateral Liquidation and Collateral Insurance process
- Handle Credit Proposal with Customer on-boarding
- Handle Amendment and Closure of an existing facility
- Financial Document Upload of the corporate clients.
- Quantitative and Qualitative analysis of the corporate clients
- Handle Credit Exceptions
- Define Credit Policy
- On Boarding Group Customers

Key Features

- Stand-alone system agnostic to back office application
- Requires very little change to bank's existing core systems
- Faster time to market
- Highly configurable based on corporate specific needs
- Flexibility in modifying processes
- Roll Based Dashboards
- 360 Degree view of Collaterals

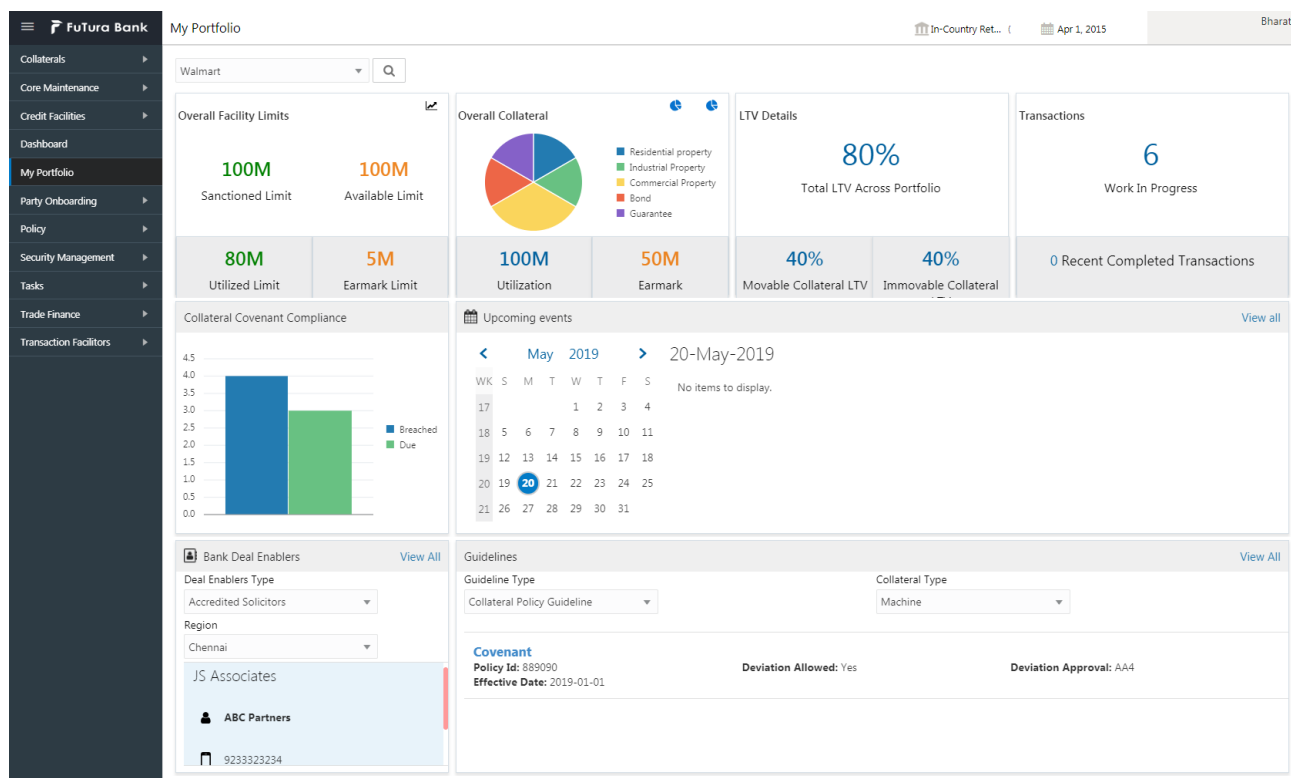
2. Collateral 360 Degree View

As part of Credit Framework, there would be a need to present 360-degree view of a collateral based on different business needs. Based on different user roles, OBCFPM currently supports the 360-degree view of a collateral for

- Relationship Manager
- Bank User
- Customer

2.1 Collateral 360 Degree View – Relationship Manager

The below shown screen will be displayed whenever an user, with a Relationship Manager role logs in into the system and on selecting the Collateral 360 Degree option from the Menu. The Dashboard is categorized into various widgets with each widget presenting a unique business functionality



The Collateral 360 Degree view provides an option to select the customer managed by the Relationship Manager. On selecting the customer from the drop down and on clicking the search button, all the widgets will be refreshed. The following widgets will be displayed for an RM user at the abstract level.

- Overall Facility Limits
- Overall Collateral
- LTV Details
- Collateral Transaction Details
- Collateral Covenant Compliance
- Upcoming Events
- Guidelines
- Deal Enablers

2.1.1 Overall Facility Limits

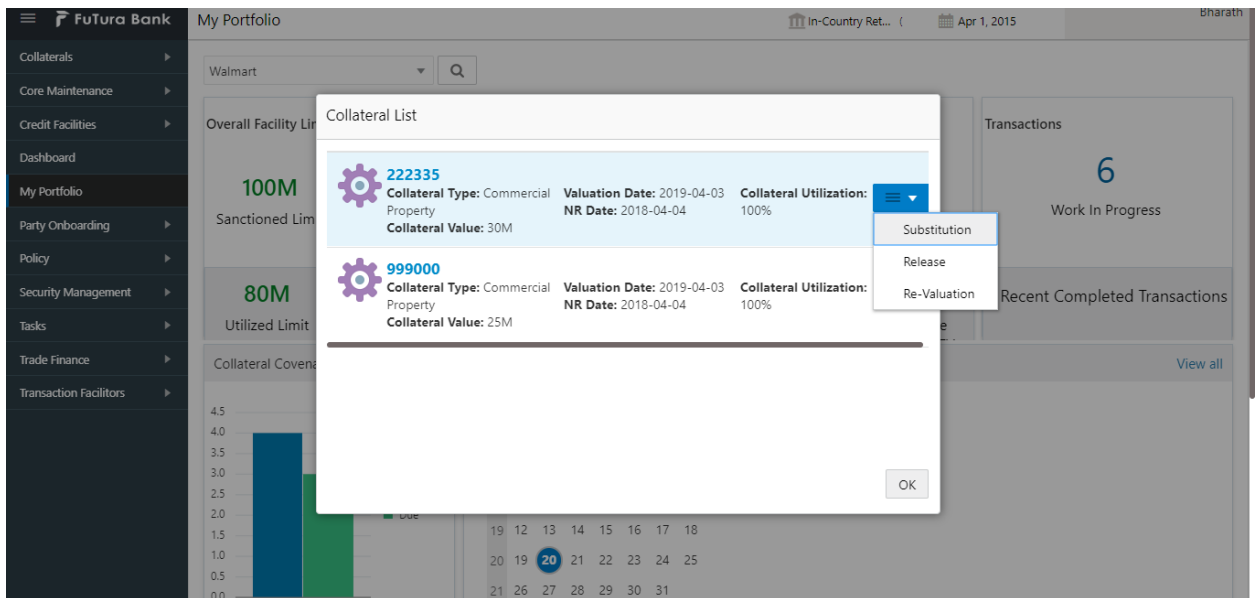
This widget provides the details about overall facility sanctioned to the customer. This widget also provides sub-classification of the facilities like

- Sanctioned Limit
- Available Limit
- Utilized Limit
- Earmark Limit

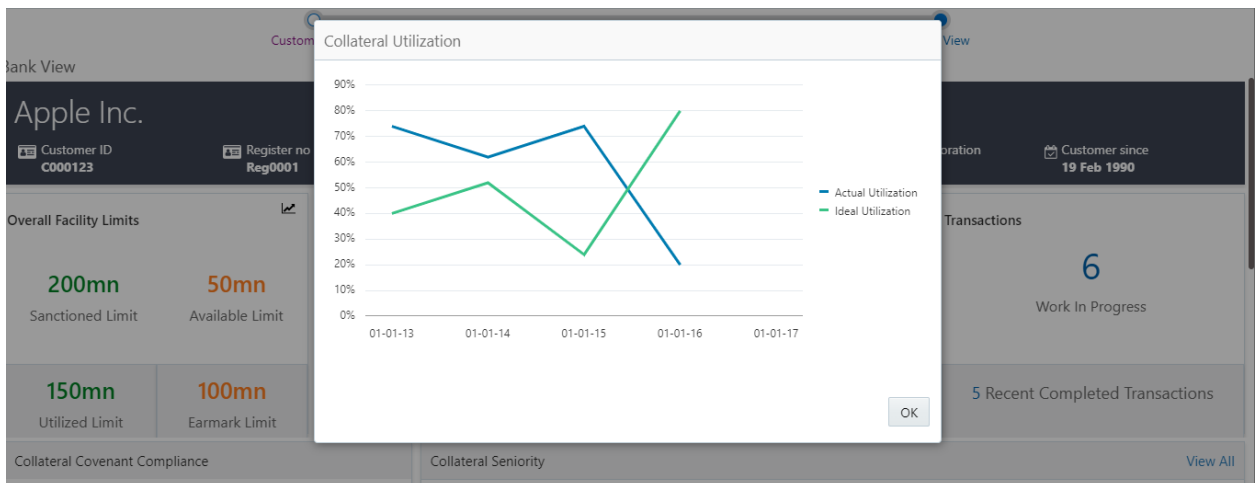
2.1.2 Overall Collateral

This widget provides the details about the Overall Collateral composition of the collateral against various collateral types. This widget also provides details about the overall utilization done against the collateral and the overall earmarking done against the collaterals

On selecting a collateral pie chart, the below shown screen will be displayed which shows the various collaterals along with the basic collateral attributes. Also shown against those collaterals were the quicker options to either Release, Re-Valuate or Substitute those collaterals

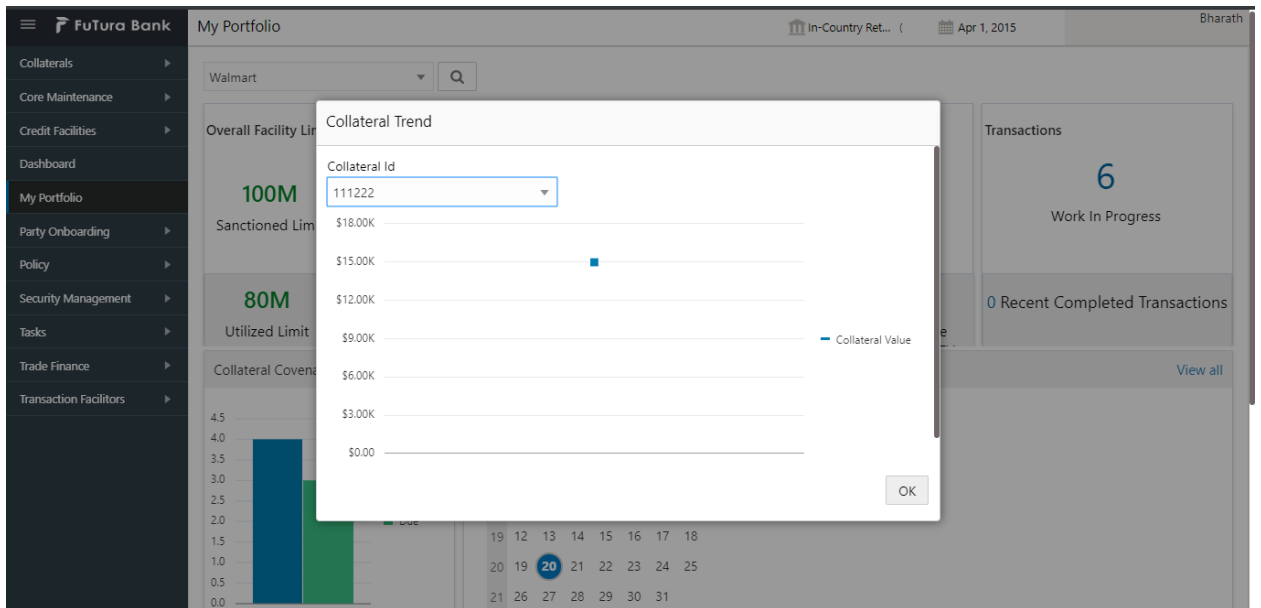


On Pressing the Utilization details in the widget, the below shown screen will be displayed



This screen shows the Line Chart with the details of how an ideal utilization of the collateral should be against the actual utilization of the collateral

On pressing the Trend Analysis button which is available at the top of the widget, the below shown screen will be displayed

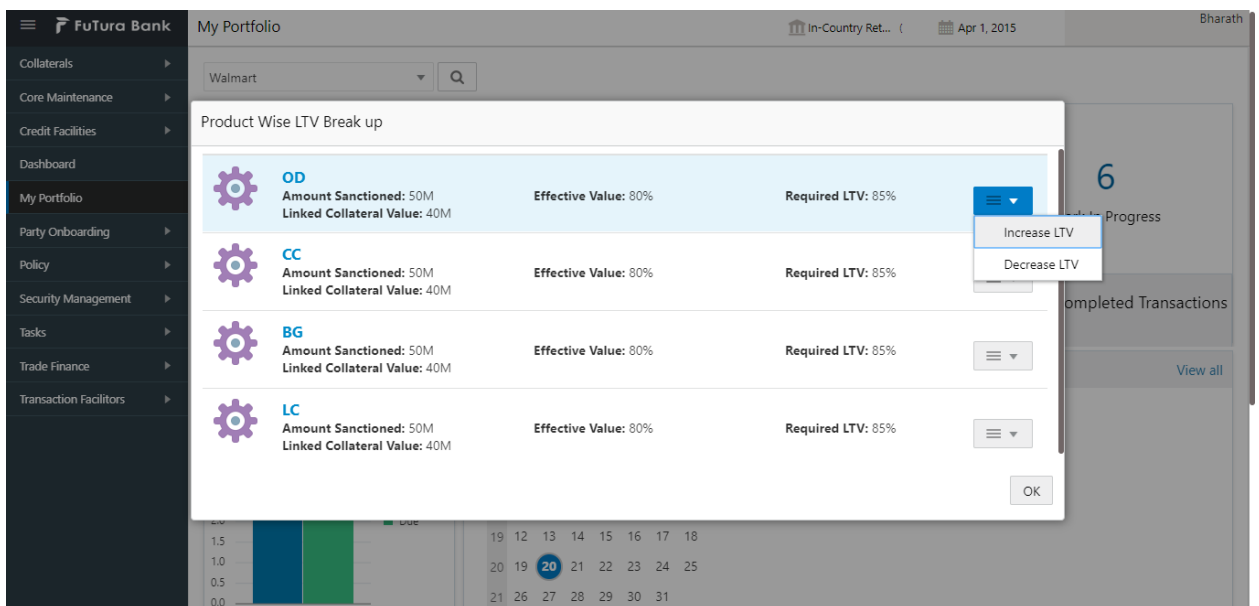


This screen shows the trend in the collateral valuation of a particular collateral across various periods. On selecting a particular Collateral ID from the dropdown, the chart refreshes accordingly with the collateral value

2.1.3 LTV Details

This widget provides the details about the LTV like the Total LTV against the portfolio, Movable Collateral LTV and Immovable Collateral LTV

On selecting the LTV details widget, the below shown screen will be displayed

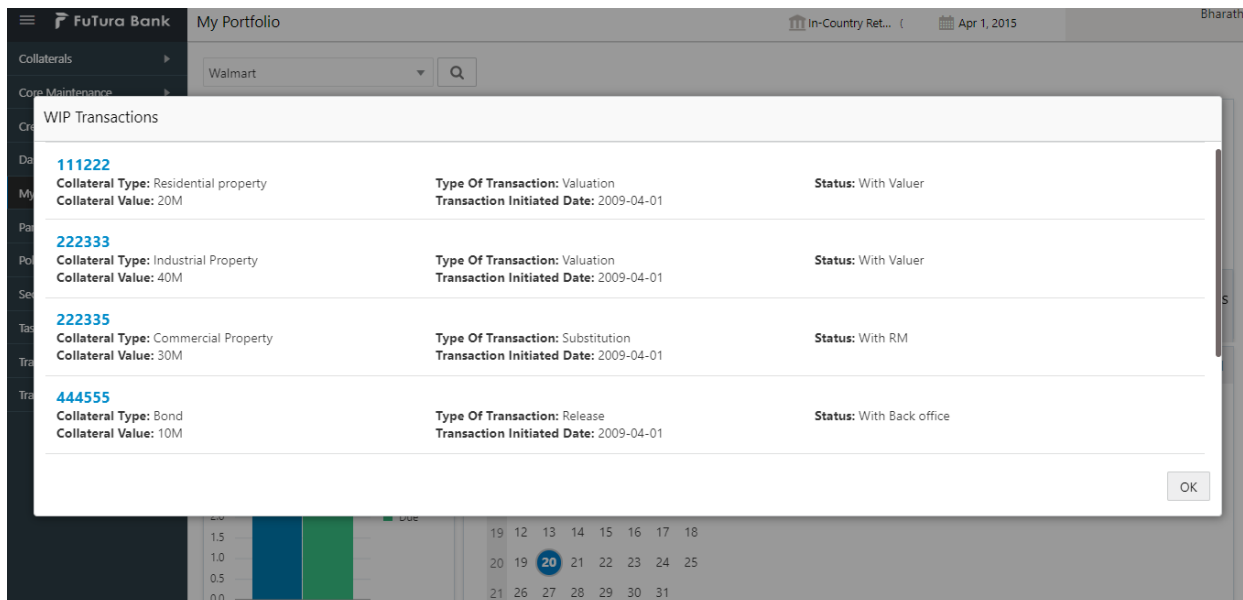


This screen displays the transaction against which the collateral is linked along with the Collateral Value, Effective value and the Required LTV. This screen also provides an option to Increase or Decrease the LTV values for a particular transaction, which in turn triggers the corresponding tasks.

2.1.4 Collateral Transaction Details

This widget provides the details about the Collateral transaction that the RM is handling/handled. The widget also provides the number of work in progress and the number of completed transactions.

On pressing the Work in progress or completed transactions, the below shown screen will be displayed

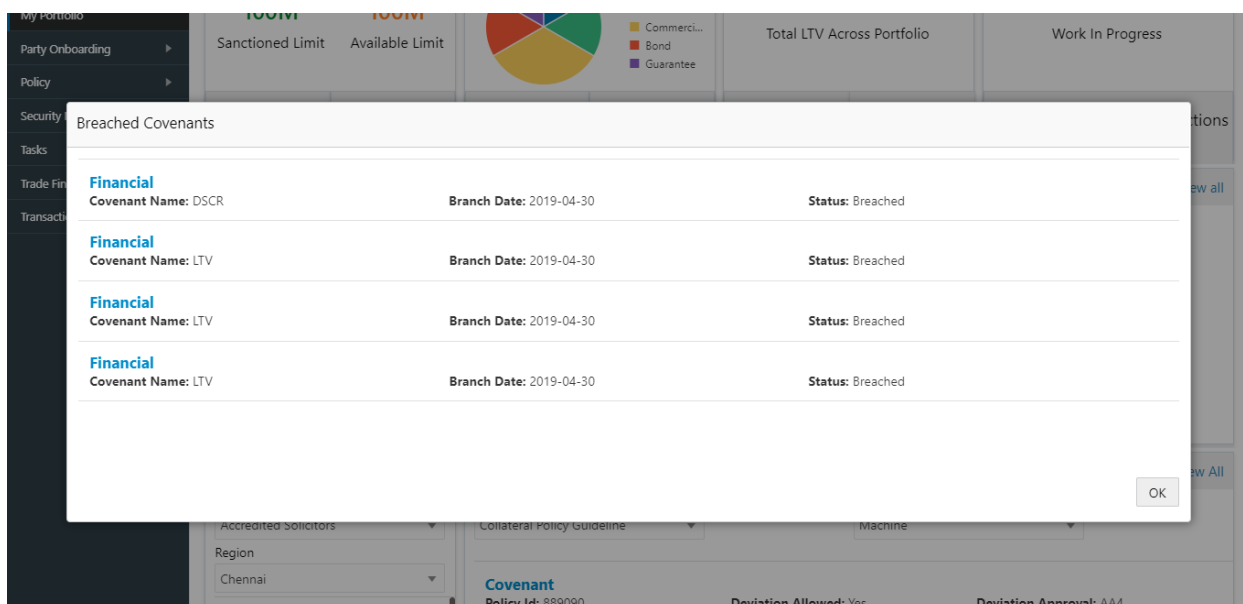


This screen shows the list of Collateral transactions that the RM has initiated and their status. The screen also displays the type of the transaction and the date on which the transaction is initiated. On selecting a particular Collateral ID in this screen, Collateral Summary screen will be displayed.

2.1.5 Collateral Covenant Compliance

This widget provides the details about the Covenant Compliance pertaining to the Collaterals. The widget displays the bar chart with details of the number of Covenants breached and the number of Covenants due for renewal.

On selecting the bar chart, the below shown screen will be shown



This screen shows the list of covenants belonging to the transactions initiated by the RM which are already in breached status or which are due for renewal. This screen also shows the details about the Covenants and the breach date if breached.

2.1.6 Upcoming Events

This widget provides the details about the important events that are due on a particular date. On selecting a particular date in the calendar, if there are any events occurring on that date, the details of the transaction and the event type will be displayed.

On pressing the view all link on top of the widget, the below screen will be displayed

The screenshot shows a dashboard with a sidebar on the left containing navigation items: Security Management, Tasks, Trade Finance, and Transaction Facilitors. The main area displays several key metrics: Utilized Limit (80M), Earmark Limit (5M), Utilization (100M), Earmark (50M), Movable Collateral (40%), and Immovable (40%). A 'Collateral Covenant Compliance' chart is visible on the left. A central 'Upcoming events' widget shows a calendar for February 2019. A modal window titled 'Upcoming events' is open, displaying a table of events:

Event On	Type	Customer Name	Purpose	Action Taken
2019-02-15	Collateral Review	Walles Inc.	Yes	Active
2019-02-18	Collateral Review 2	Walles Inc.	Yes	Active
2019-02-02	Collateral Review	Walles Inc.	Yes	Active
2019-02-28	Collateral Review	Walles Inc.	Yes	Active
2019-02-25	Collateral Review	Walles Inc.	Yes	Active

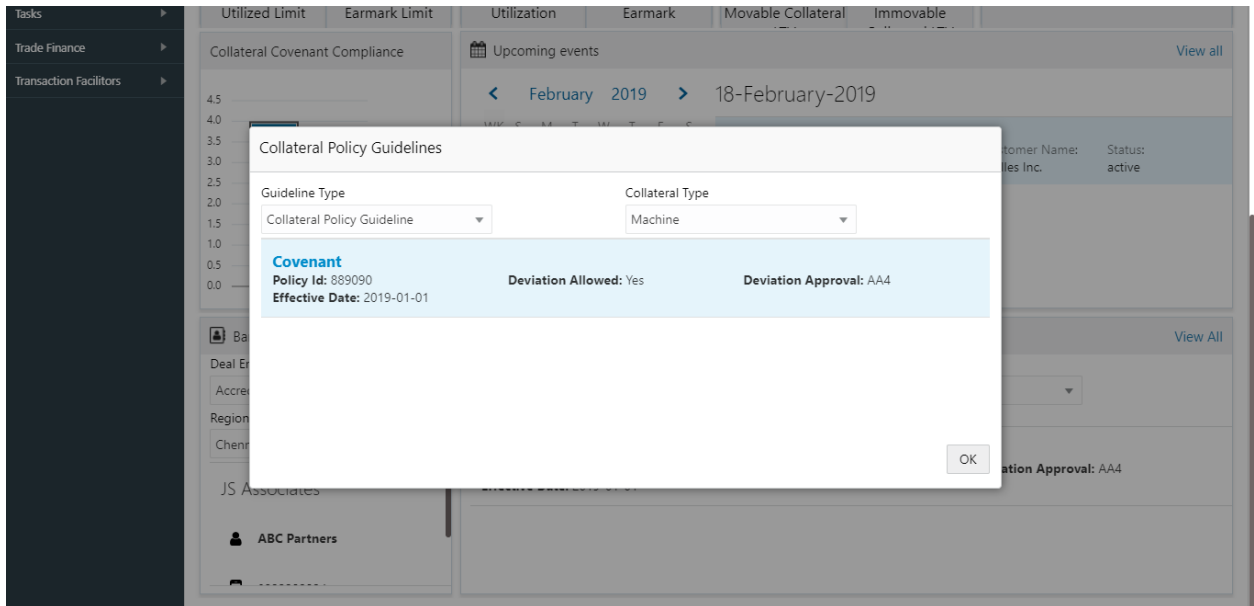
The modal also includes an 'Ok' button. In the background, a 'Covenant' section shows details for Policy Id: 889090, Effective Date: 2019-01-01, Deviation Allowed: Yes, and Deviation Approval: AA4. Customer details for 'Walles Inc.' (Status: active) are also visible.

This screen shown the list of all the events due for occurrence with the date on which the event is due along with the type of the event.

2.1.7 Guidelines

This widget provides the details about the guidelines for a particular collateral type and Guideline Type. On selecting these values, the applicable policy is displayed along with the deviation details.

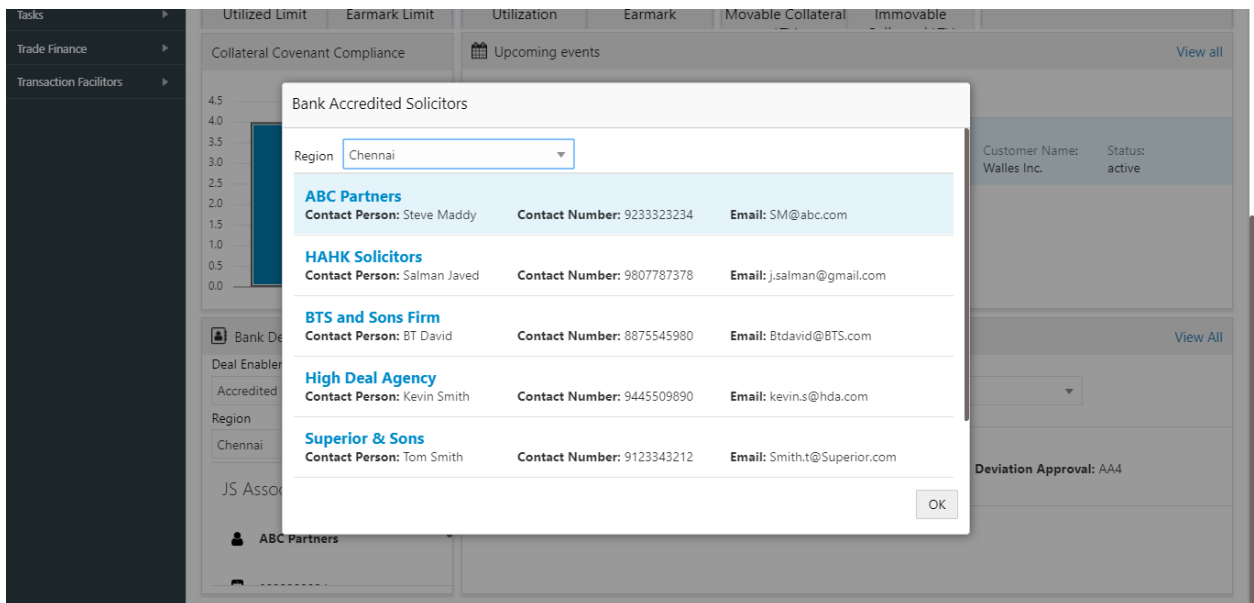
On pressing the view details link, the below shown screen will be displayed



2.1.8 Bank Deal Enablers

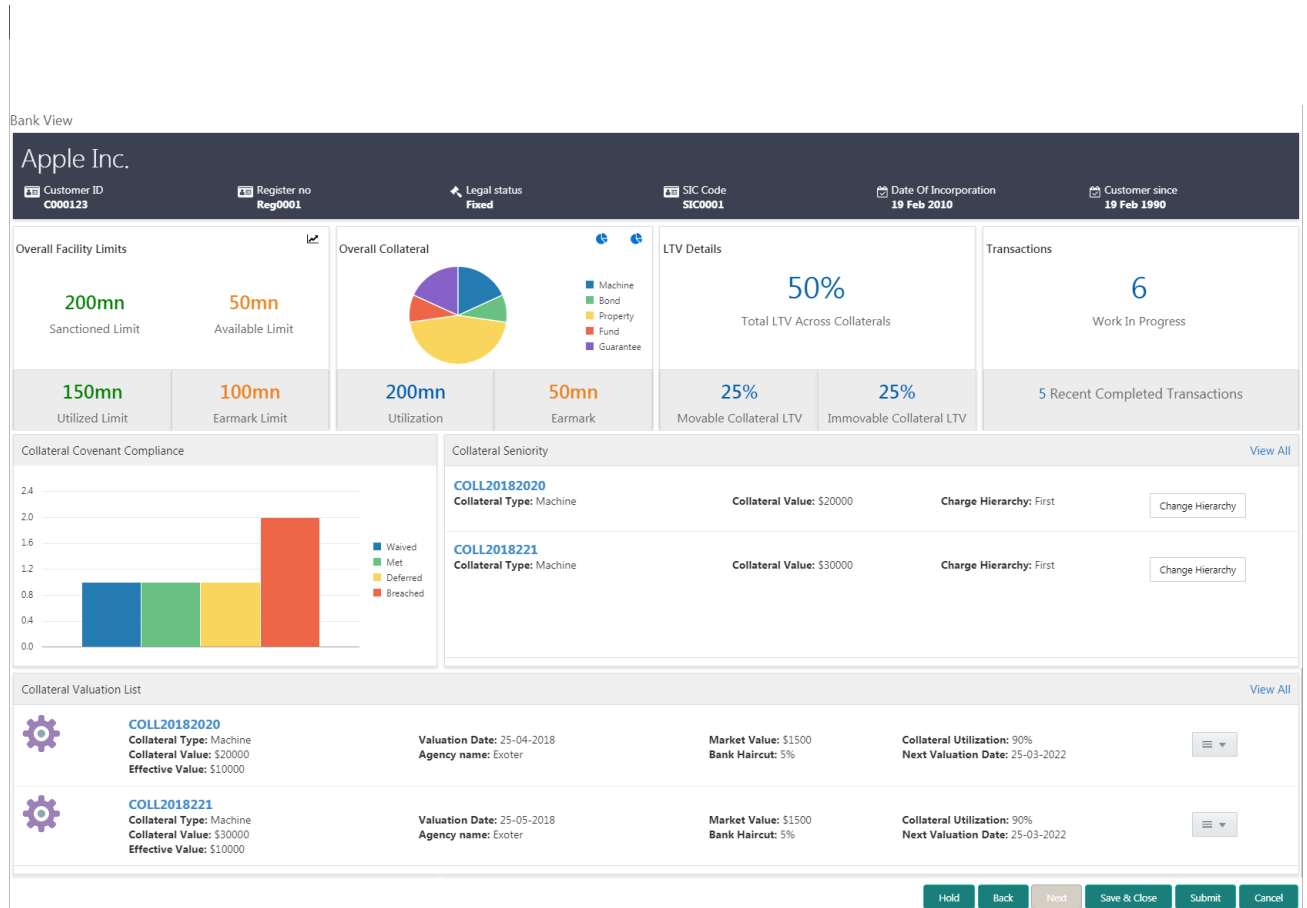
This widget provides the details about the Collateral Deal Enablers. Based on the type and the region selected, the corresponding deal enablers will be displayed

On selecting the view details link, the below shown screen will be displayed



2.2 Collateral 360 Degree View – Bank User View

The below shown screen will be displayed whenever an user, with a Credit User role logs in into the system and on selecting the Collateral 360 Degree option from the Menu. The Dashboard is categorized into various widgets with each widget presenting a unique business functionality



The Collateral 360 Degree view provides an option to view the below mentioned details from an overall collateral portfolio perspective.

- Overall Facility Limits
- Overall Collateral
- LTV Details
- Collateral Transaction Details
- Collateral Covenant Compliance
- Collateral Seniority
- Collateral Valuation List

2.2.1 Overall Facility Limits

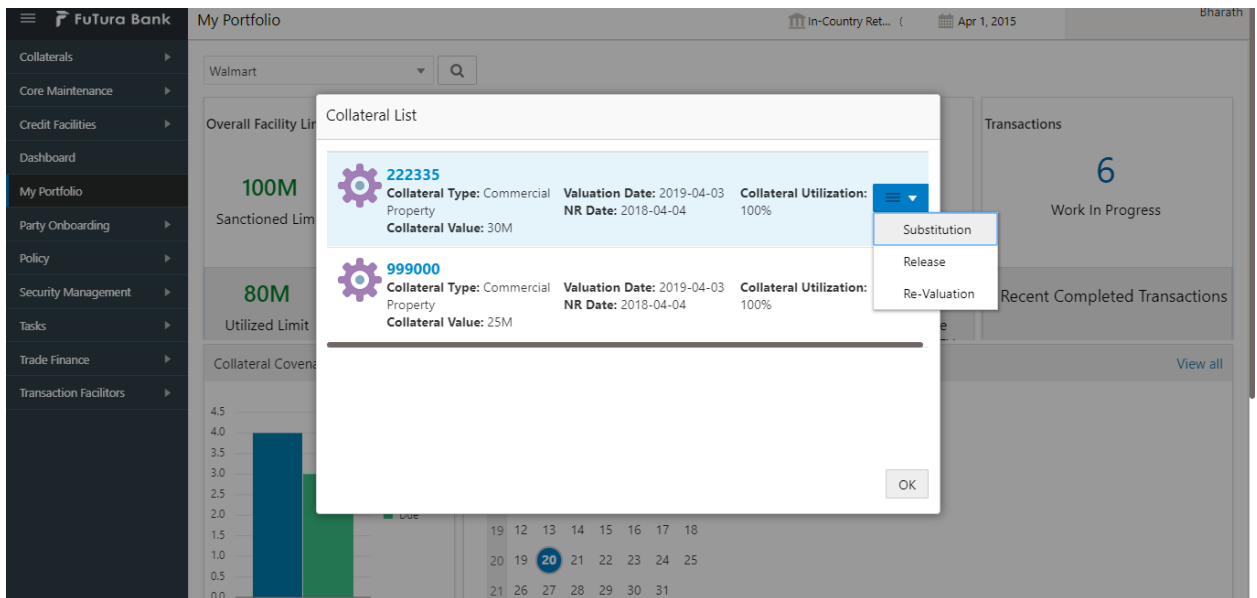
This widget provides the details about overall facility sanctioned at the bank level. This widget also provides sub-classification of the facilities like

- Sanctioned Limit
- Available Limit
- Utilized Limit
- Earmark Limit

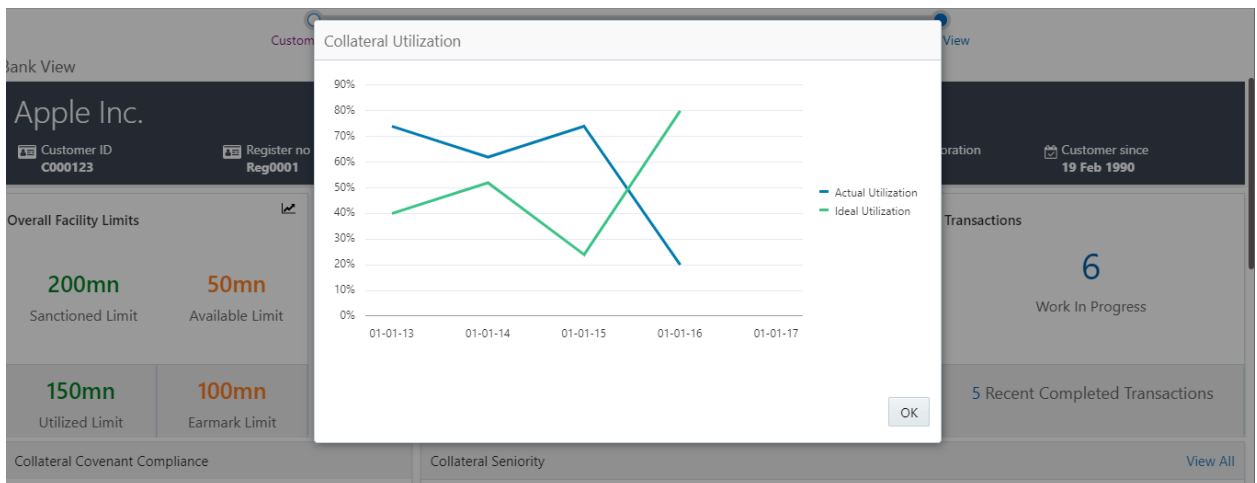
2.2.2 Overall Collateral

This widget provides the details about the Overall Collateral composition of the collateral against various collateral types. This widget also provides details about the overall utilization done against the collateral and the overall earmarking done against the collaterals

On selecting a collateral pie chart, the below shown screen will be displayed which shows the various collaterals along with the basic collateral attributes. Also shown against those collaterals were the quicker options to either Release, Re-Valuate or Substitute those collaterals

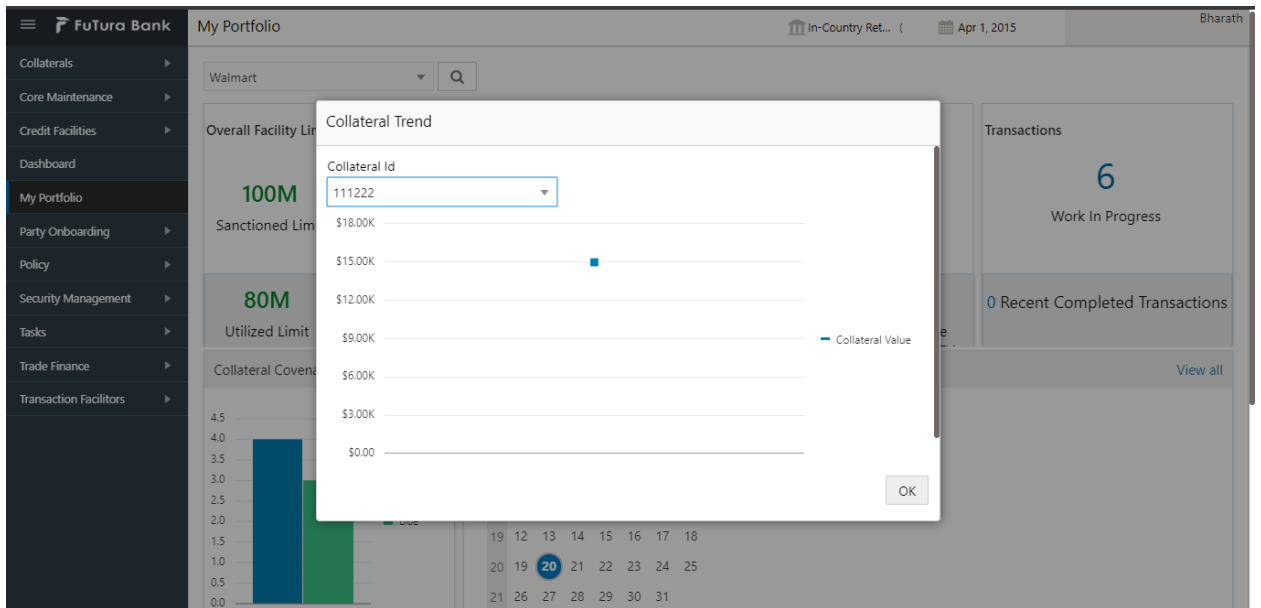


On Pressing the Utilization details in the widget, the below shown screen will be displayed



This screen shows the Line Chart with the details of how an ideal utilization of the collateral should be against the actual utilization of the collateral

On pressing the Trend Analysis button which is available at the top of the widget, the below shown screen will be displayed

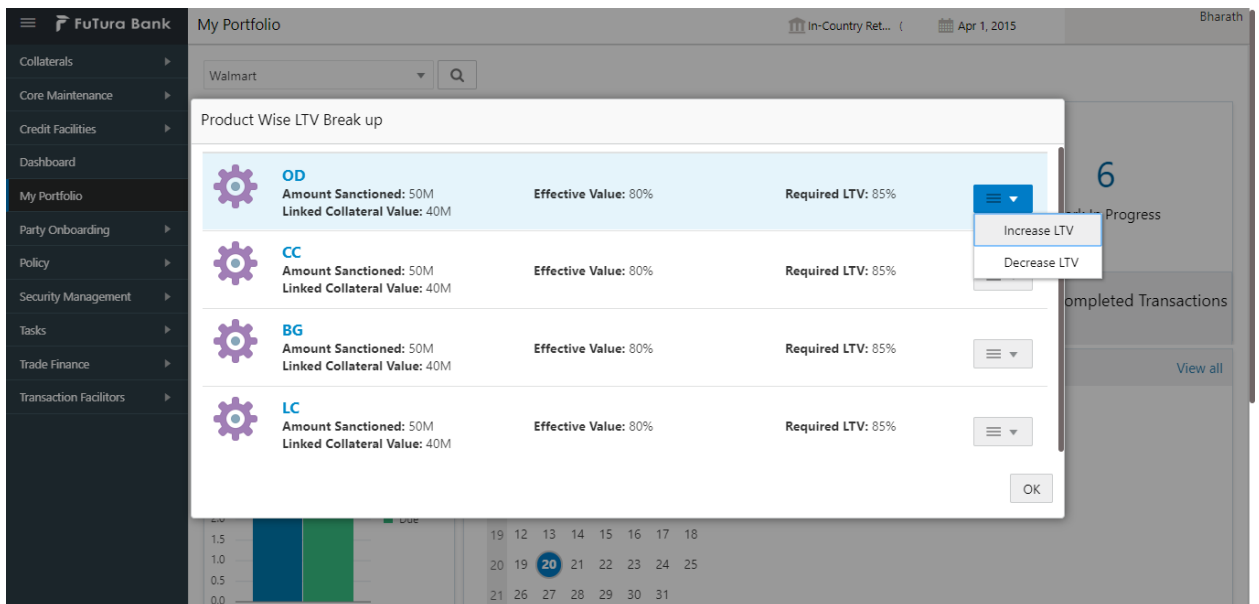


This screen shows the trend in the collateral valuation of a particular collateral across various periods. On selecting a particular Collateral ID from the dropdown, the chart refreshes accordingly with the collateral value

2.2.3 LTV Details

This widget provides the details about the LTV like the Total LTV against the portfolio, Movable Collateral LTV and Immovable Collateral LTV

On selecting the LTV details widget, the below shown screen will be displayed

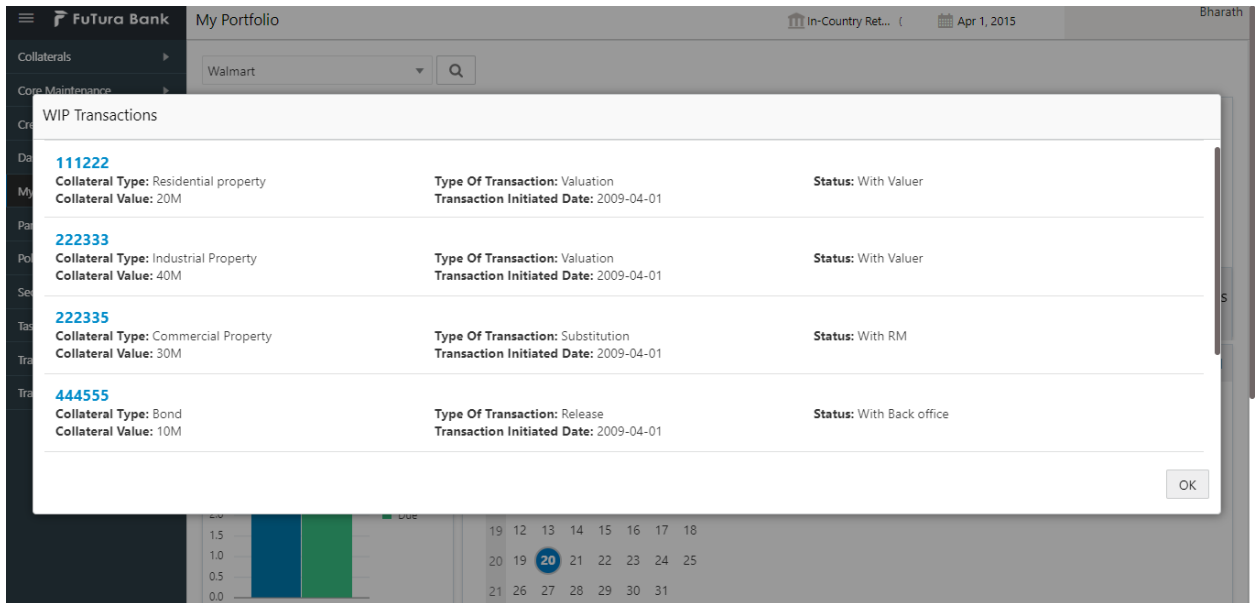


This screen displays the transaction against which the collateral is linked along with the Collateral Value, Effective value and the Required LTV. This screen also provides an option to Increase or Decrease the LTV values for a particular transaction, which in turn triggers the corresponding tasks.

2.2.4 Collateral Transaction Details

The widget provides the number of work in progress and the number of completed collateral transactions.

On pressing the Work in progress or completed transactions, the below shown screen will be displayed

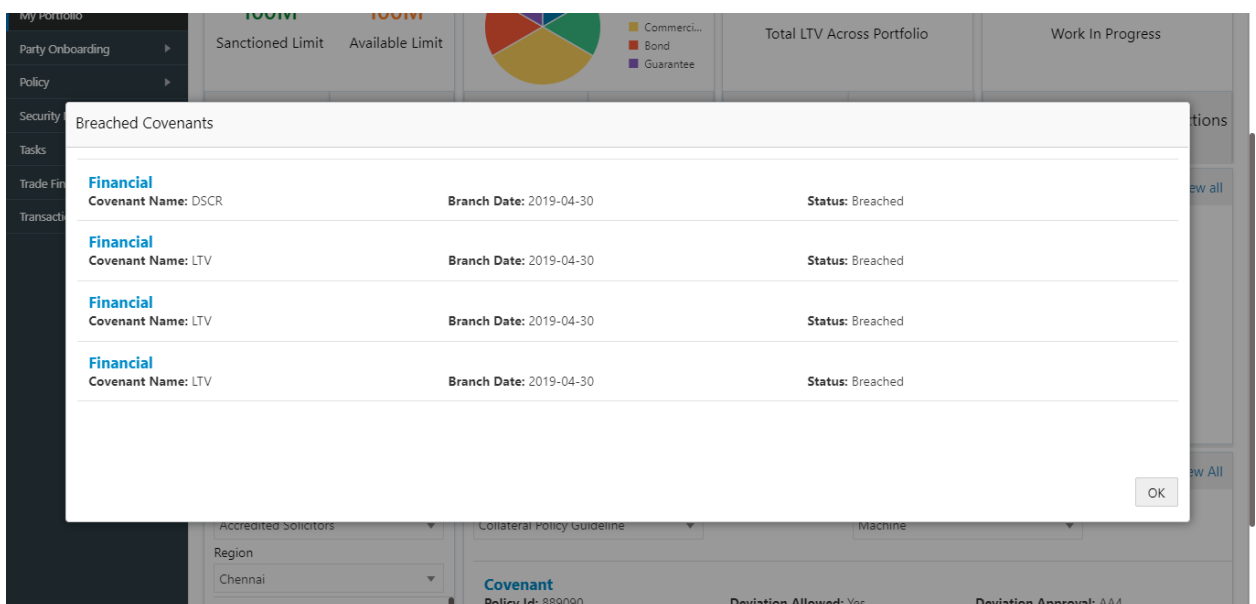


This screen shows the list of Collateral transactions initiated and their status. The screen also displays the type of the transaction and the date on which the transaction is initiated. On selecting a particular Collateral ID in this screen, Collateral Summary screen will be displayed.

2.2.5 Collateral Covenant Compliance

This widget provides the details about the Covenant Compliance pertaining to the Collaterals. The widget displays the bar chart with details of the number of Covenants breached and the number of Covenants due for renewal.

On selecting the bar chart, the below shown screen will be shown

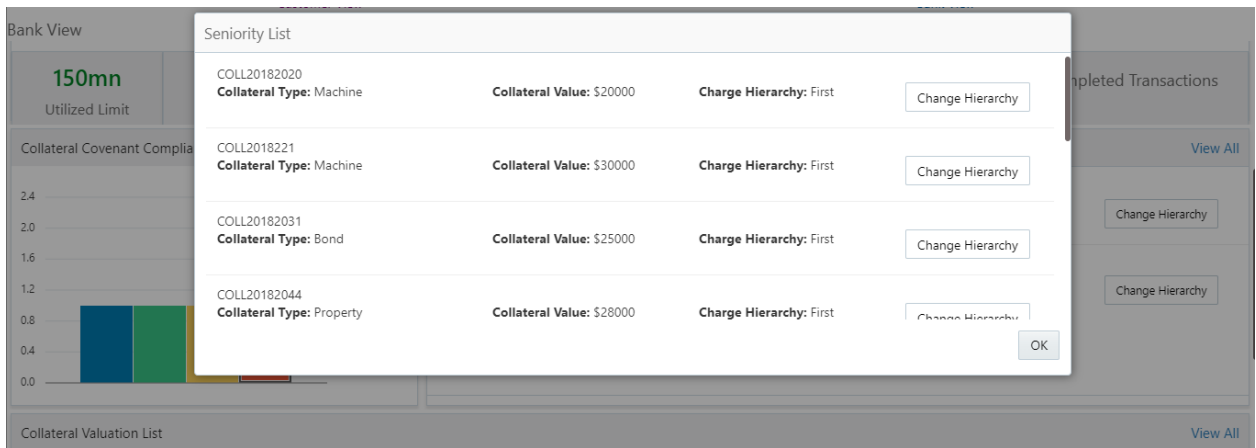


This screen shows the list of covenants belonging to the transactions which are already in breached status or which are due for renewal. This screen also shows the details about the Covenants and the breach date if breached.

2.2.6 Collateral Seniority

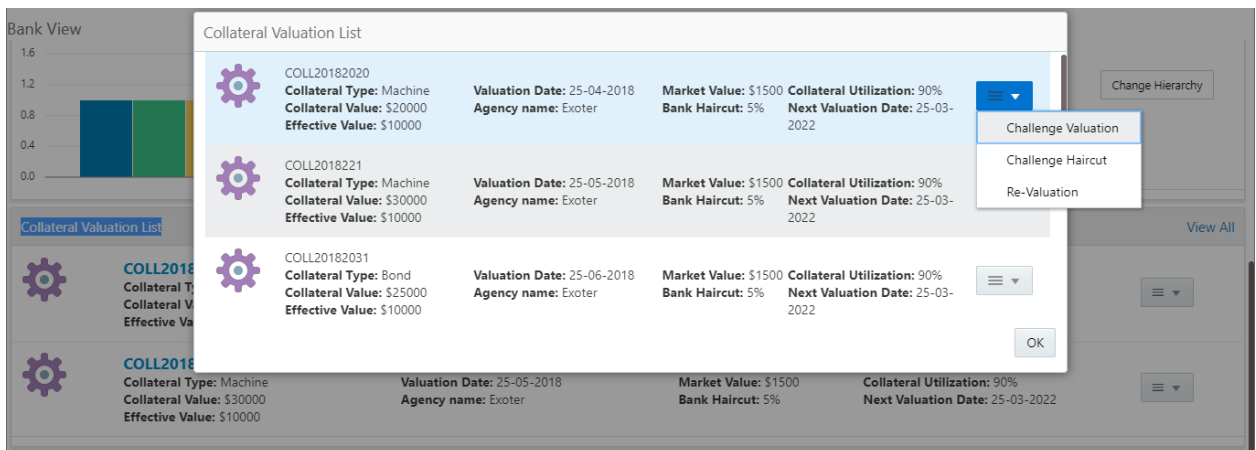
This widget provides the list of collateral with their charge hierarchy displayed. This widget also provides facility to initiate a change in seniority by pressing the Change Seniority button in the widget. On pressing this button, seniority change tasks should be invoked and should be taken forward for completion.

On pressing the view details link, the below shown screen will be displayed



2.2.7 Collateral Valuation List

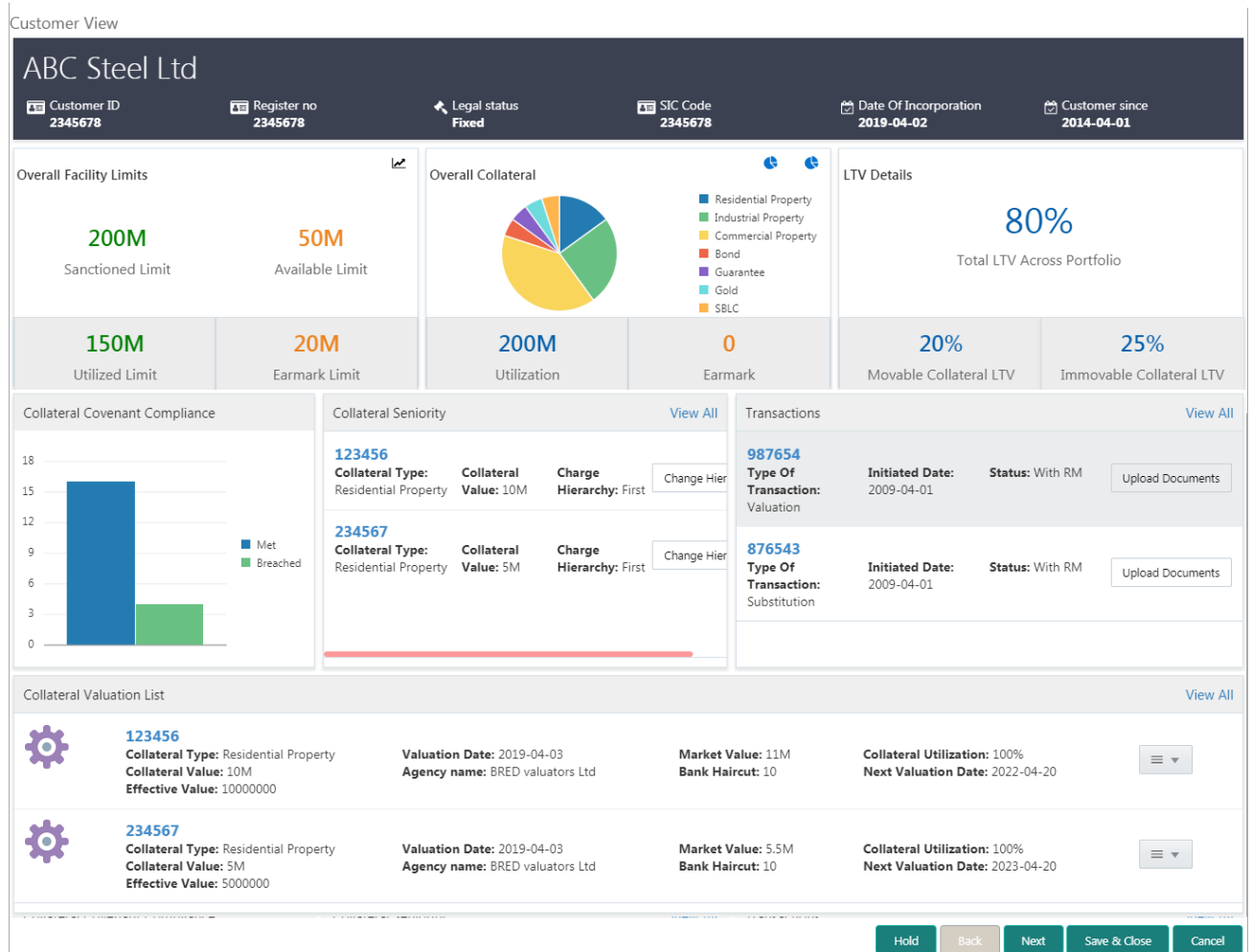
This widget provides the list of collateral with their valuation details displayed. This widget also provides facility to review the valuation done on the collateral, review the haircut % defined or initiate a re-valuation task for the collateral



On pressing the view details link, the above shown screen will be displayed.

2.3 Collateral 360 Degree View – Customer View

The below shown screen will be displayed whenever an user, with a Bank Customer role logs in into the system and on selecting the Collateral 360 Degree option from the Menu. The Dashboard is categorized into various widgets with each widget presenting a unique business functionality



The Collateral 360 Degree view provides an option to view the below mentioned details from a customer's collateral portfolio perspective.

- Overall Facility Limits
- Overall Collateral
- LTV Details
- Collateral Transaction Details
- Collateral Covenant Compliance
- Collateral Seniority
- Collateral Valuation List

2.3.1 Overall Facility Limits

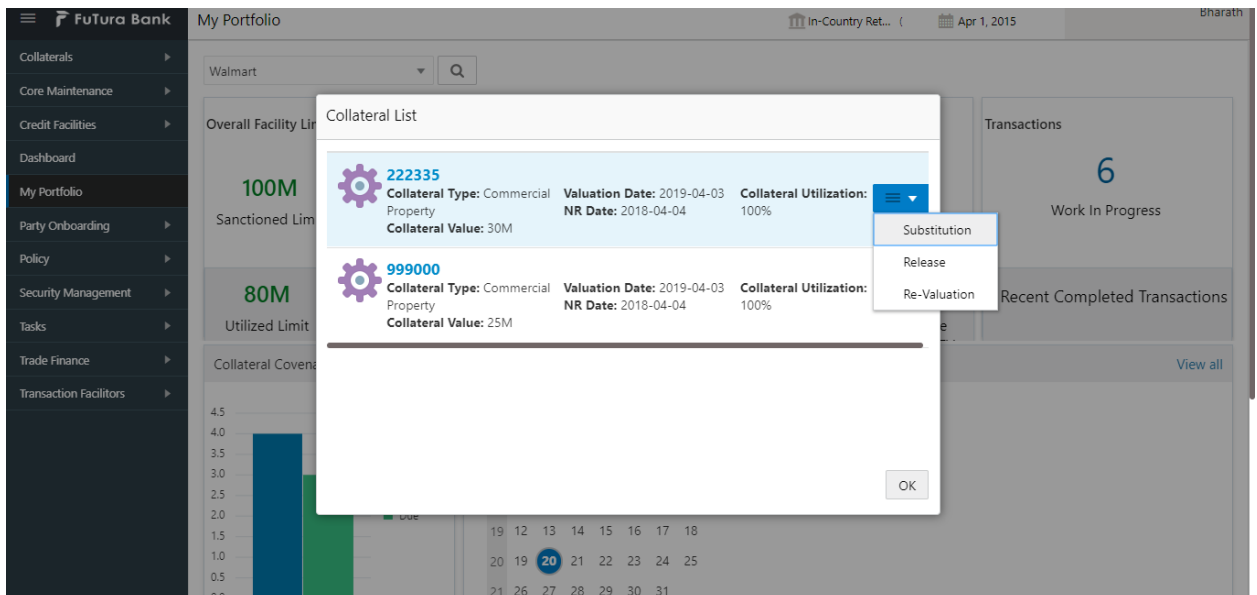
This widget provides the details about overall facility sanctioned at the bank level. This widget also provides sub-classification of the facilities like

- Sanctioned Limit
- Available Limit
- Utilized Limit
- Earmark Limit

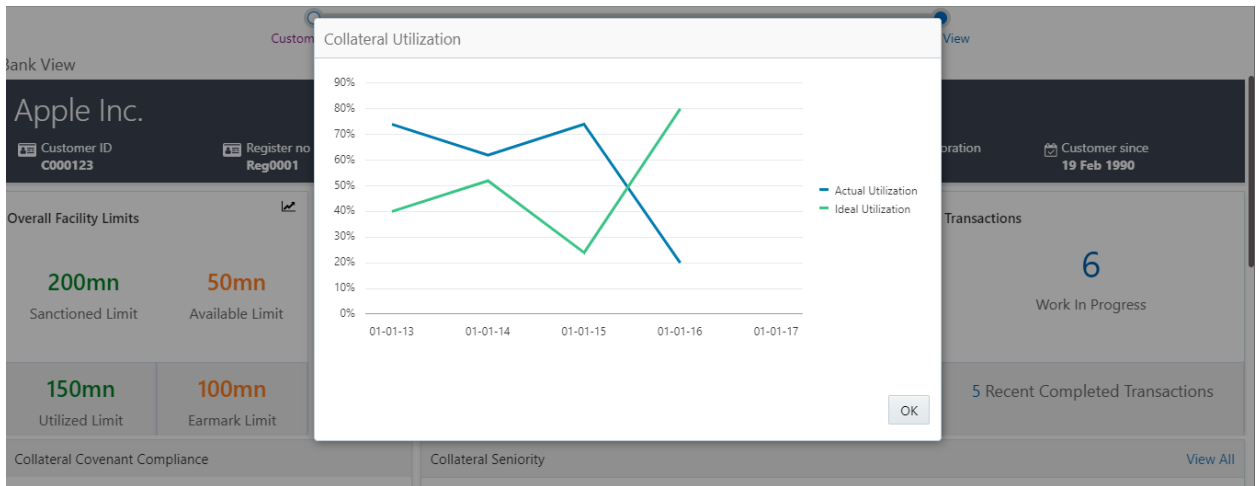
2.3.2 Overall Collateral

This widget provides the details about the Overall Collateral composition of the collateral against various collateral types. This widget also provides details about the overall utilization done against the collateral and the overall earmarking done against the collaterals

On selecting a collateral pie chart, the below shown screen will be displayed which shows the various collaterals along with the basic collateral attributes. Also shown against those collaterals were the quicker options to either Release, Re-Valueate or Substitute those collaterals

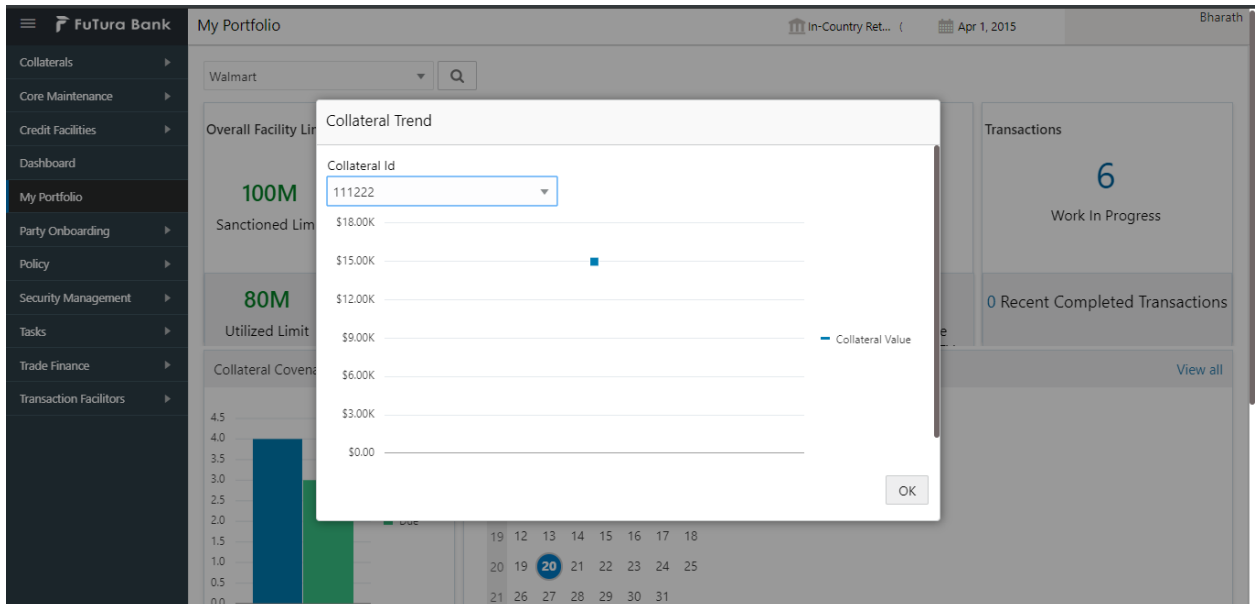


On Pressing the Utilization details in the widget, the below shown screen will be displayed



This screen shows the Line Chart with the details of how an ideal utilization of the collateral should be against the actual utilization of the collateral

On pressing the Trend Analysis button which is available at the top of the widget, the below shown screen will be displayed

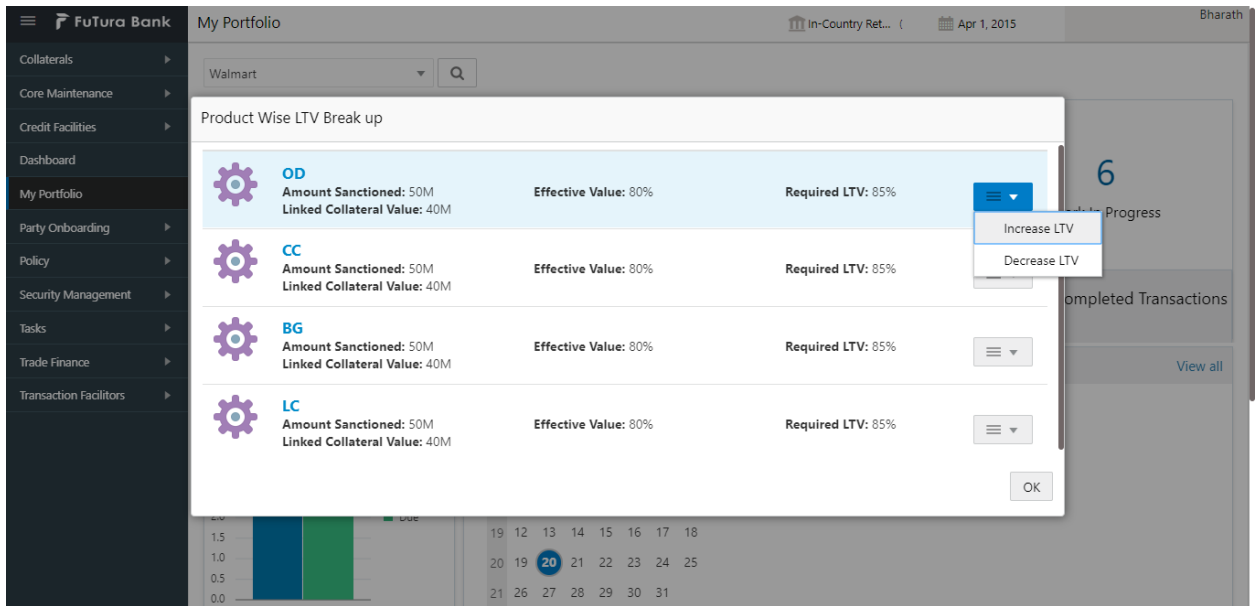


This screen shows the trend in the collateral valuation of a particular collateral across various periods. On selecting a particular Collateral ID from the dropdown, the chart refreshes accordingly with the collateral value

2.3.3 LTV Details

This widget provides the details about the LTV like the Total LTV against the portfolio, Movable Collateral LTV and Immovable Collateral LTV

On selecting the LTV details widget, the below shown screen will be displayed

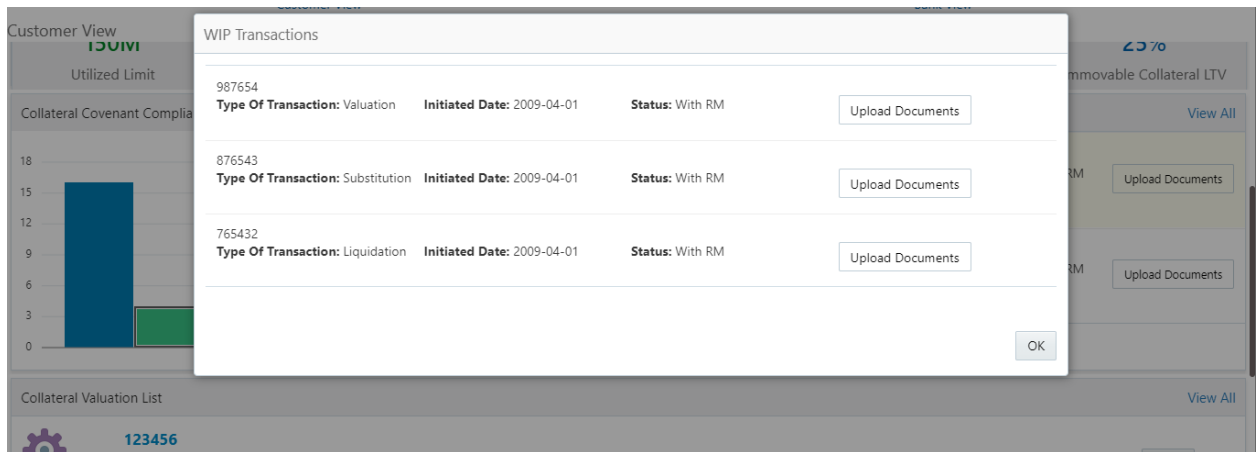


This screen displays the transaction against which the collateral is linked along with the Collateral Value, Effective value and the Required LTV. This screen also provides an option to Increase or Decrease the LTV values for a particular transaction, which in turn triggers the corresponding tasks.

2.3.4 Collateral Transaction Details

The widget provides the number of work in progress and the number of completed collateral transactions.

On pressing the Work in progress or completed transactions, the below shown screen will be displayed

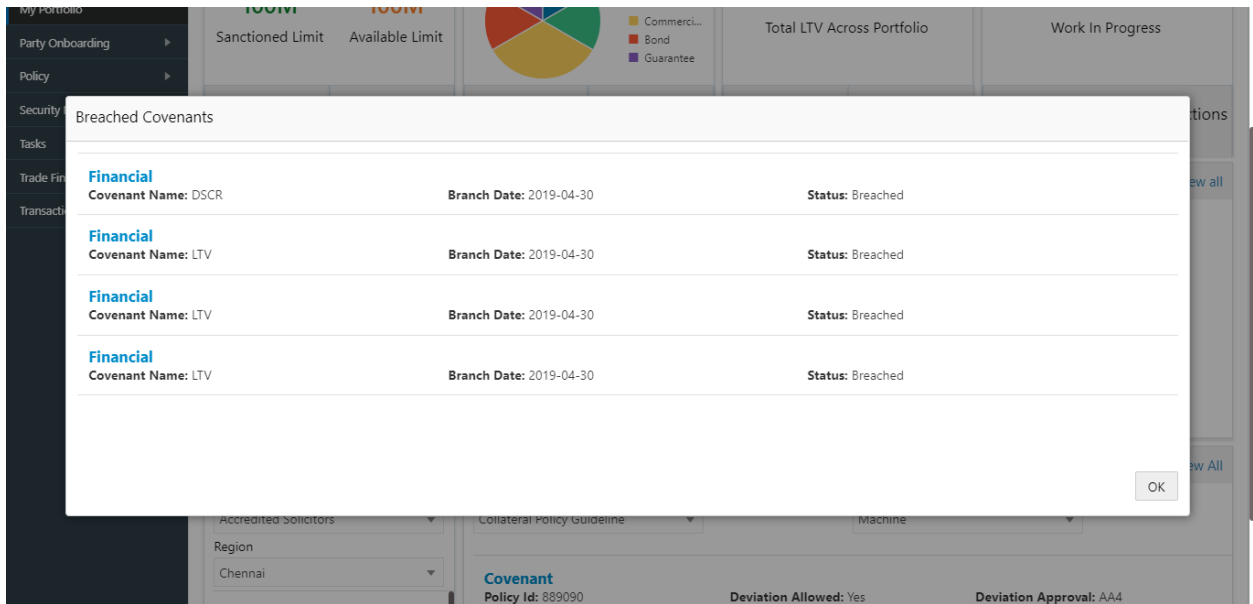


This screen shows the list of Collateral transactions initiated and their status. The screen also displays the type of the transaction and the date on which the transaction is initiated. On selecting a particular Collateral ID in this screen, Collateral Summary screen will be displayed. In case if any of the transaction is pending with the customer for a document upload, Upload Documents button will be available and the customer should be able to upload the document against the collateral from this widget.

2.3.5 Collateral Covenant Compliance

This widget provides the details about the Covenant Compliance pertaining to the Collaterals. The widget displays the bar chart with details of the number of Covenants breached and the number of Covenants due for renewal.

On selecting the bar chart, the below shown screen will be shown

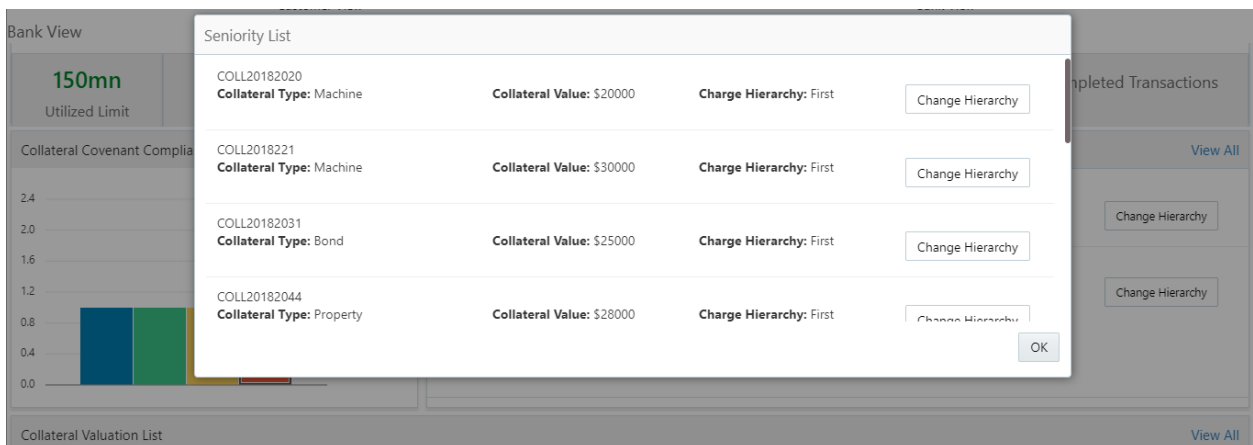


This screen shows the list of covenants belonging to the transactions which are already in breach status or which are due for renewal. This screen also shows the details about the Covenants and the breach date if breach.

2.3.6 Collateral Seniority

This widget provides the list of collateral with their charge hierarchy displayed. This widget also provides facility to initiate a change in seniority by pressing the Change Seniority button in the widget. On pressing this button, seniority change tasks should be invoked and should be taken forward for completion.

On pressing the view details link, the below shown screen will be displayed



2.3.7 Collateral Valuation List

This widget provides the list of collateral with their valuation details displayed. This widget also provides facility to review the valuation done on the collateral, review the haircut % defined or initiate a re-valuation task for the collateral

Collateral Valuation List

ID	Collateral Type	Valuation Date	Agency name	Market Value	Bank Haircut	Collateral Utilization	Next Valuation Date
COLL20182020	Machine Collateral Value: \$20000 Effective Value: \$10000	25-04-2018	Exoter	\$1500	5%	90%	25-03-2022
COLL2018221	Machine Collateral Value: \$30000 Effective Value: \$10000	25-05-2018	Exoter	\$1500	5%	90%	25-03-2022
COLL20182031	Bond Collateral Value: \$25000 Effective Value: \$10000	25-06-2018	Exoter	\$1500	5%	90%	25-03-2022

Context Menu Options:
 Challenge Valuation
 Challenge Haircut
 Re-Valuation

Background Table (Collateral Valuation List):

ID	Collateral Type	Valuation Date	Agency name	Market Value	Bank Haircut	Collateral Utilization	Next Valuation Date
COLL20182020	Machine Collateral Value: \$20000 Effective Value: \$10000	25-04-2018	Exoter	\$1500	5%	90%	25-03-2022

On pressing the view details link, the above shown screen will be displayed.

3. Reference and Feedback

3.1 References

For more information on any related features, you can refer to the following documents:

- Oracle Banking Getting Started User Guide
- Security Management System User Guide
- Common Core User Guide
- Process Maintenance Worklist User Guide
- Oracle Banking Credit Facilities Process Management Installation Guides

Documentation Accessibility

For information about Oracle's commitment to accessibility, visit the Oracle Accessibility Program website at <http://www.oracle.com/pls/topic/lookup?ctx=acc&id=docacc>.

3.2 Feedback and Support

Oracle welcomes customers' comments and suggestions on the quality and usefulness of the document. Your feedback is important to us. If you have a query that is not covered in this user guide or if you still need assistance, please contact documentation team.